

## Three Unique Floor Plans Available

3-story floor plans with space to actually live your life. Standard features for a luxurious life:

Interior Style and Quality

9+ foot ceilings

Private terrace

Granite slab counters throughout

Kohler fixtures

Structured CAT6 wiring for internet, phone,  
cable, security and surround sound

Rich wood flooring in kitchen, living and dining

Custom tiling in bathrooms and utility areas

Recessed lighting

Stainless steel appliance package

Energy, Efficiency and Environment

Zoned, 13 SEER A/C

Low "e" double pane windows

Blown battR30 insulation

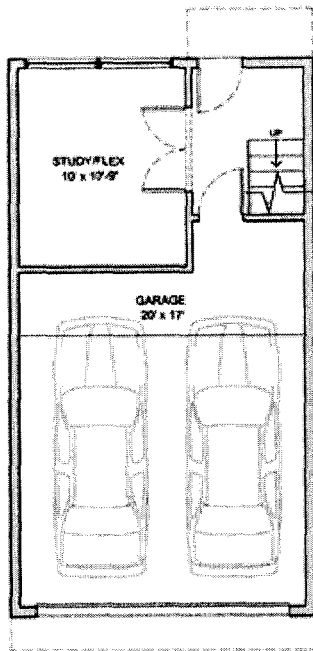
Available Floor Plans

1. Bungalow A : 3bed/3bath, 1556 sf.

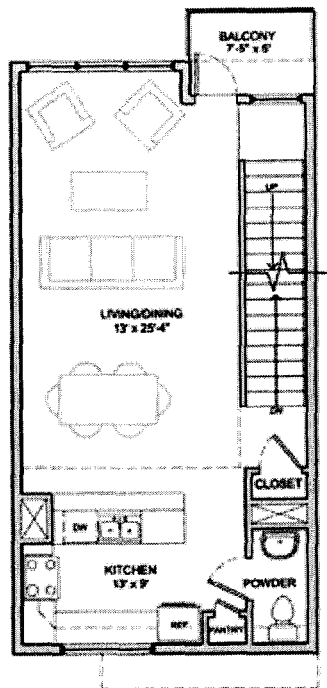
2. Bungalow B : 2bed/2.5bath/study, 1455 sf.

3. Courtyard : 2bed/2.5bath/study, 1462 sf.  
(pictured below)

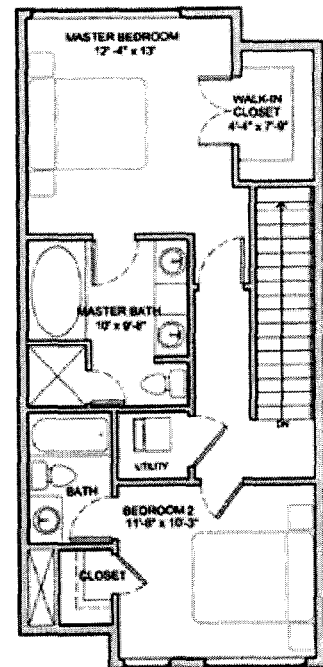
Go to [www.sycamoreaustin.com](http://www.sycamoreaustin.com) to view all floor plans.



**FIRST FLOOR PLAN**  
COURTYARD  
203 AC SF  
407 GARAGE SF  
9' CEILINGS  
1462 TOTAL AC SF  
1906 TOTAL COURTYARD SF



**SECOND FLOOR PLAN**  
COURTYARD  
597 AC SF  
BALCONY 37 SF  
934 TOTAL SF  
10' CEILINGS



**THIRD FLOOR PLAN**  
COURTYARD  
082 AC SF  
862 TOTAL SF  
9' CEILINGS